

2D Imaging

Description

- [7676655430](tel:7676655430)
- ngoscans91@gmail.com



default watermark

- [Home](#)
- [About Us](#)
- [Services](#)
 - [2D Imaging](#)
 - [3D Imaging](#)
 - [CBCT](#)
- [FAQs](#)
 - [CBCT FAQs](#)
 - [OPG / Lateral Ceph FAQs](#)
 - [Common FAQs](#)
- [Career](#)
- [Referral Form](#)



[CONTACT US](#)

Services

Home

2D Imaging Services

2D Imaging Services

The following are the different types of 2D imaging services available at our centre



default watermark

OPG/Panoramic X-ray

An OPG (Orthopantomograph) is a type of 2D dental X-ray that captures a broader view of the entire mouth, including teeth, jaws, and surrounding structures, in a single scan

Lateral Ceph X-ray

A lateral cephalogram is a standardized, side-view X-ray of the skull, showing the bony structures and soft tissues



Hand Wrist X-ray

It is a diagnostic imaging test commonly used in orthodontics to evaluate the bone age and skeletal maturity in children and adolescents

TMJ X-ray

It is a specialized X-ray used to visualize the temporomandibular joint; these X-rays are primarily used to diagnose and evaluate TMJ disorders



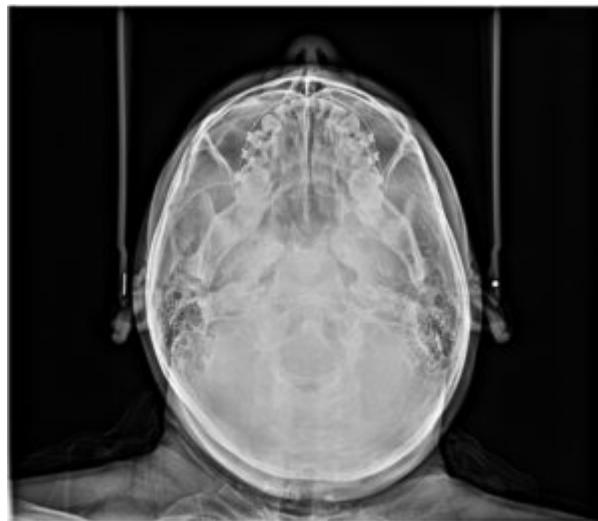
AP/PA View

It is a type of skull x-ray used to assess the skull's structure, identifying fractures, deformities, and other skull-related issues

PNS/ Waters View



air sinuses for its development, abnormalities, infections and many



SMV View

It is a type of x-ray used assess structures like foremen magnum, sphenoid sinus, and zygomatic arch for suspected fractures and other abnormalities

Reverse Towne View

It is a type of x-ray used assess suspected fractures of zygomatic arch, mandibular condyles and base of the skull



Default watermark



Timings: Monday - Saturday 9:30 AM - 9:00 PM
Sunday: 9:30 AM - 1:00 PM

Useful Links

- Home
- Services
- FAQs
- Contact Us

Our Services

- [CBCT](#)
 - [2D Imaging](#)
 - [3D Imaging](#)

default watermark

Contact Us

#2230, C Block, D Group, Muddinapalya Main Road, Behind Hotel Ashwa, Gidadakonenahalli,
Nagarbhavi, Bengaluru - 56009, Karnataka

7676655430

ngoscans91@gmail.com

Copyright 2025, Nagashree Oral Scans. All Rights Reserved.

Date Created

August 13, 2025

Author

karunakar679